



OSP STOCKFEEDS

PRODUCT DATA SHEET



Calf Pellets

Product Description

A pelleted calf feed that is manufactured from DDG-S Wheat Pellets. Designed to encourage rumen development in calves. Pellet size is 6mm.

The product does not contain any genetically modified organisms.

DDG-S Wheat Pellets are a combination of Manildra's unique wheat derived DDG-S plus the addition of some wheat starch to boost overall starch levels in the product.

Product Ingredients: (selected from)

DDG-s Wheat Pellets and Minerals and Vitamins and Bovatec 20cc®.

Typical Analysis* – Dry Matter Basis

Dry Matter	89 percent
Crude Protein	20 percent
Starch	15 percent
NDF	28 percent
Metabolisable Energy	12.3 mj / Kg DM

*Due to ingredients being derived from natural sources, analysis can vary slightly from the above.

Product Features:

- Palatable mix of high quality ingredients mainly derived from digestible cereal sources.
- Good level of protein and fibre for growth and early rumen development.
- Vitamin and mineral package for health and development. Includes Biotin, a vitamin that improves hoof health and HyD® for profoundly improved calcium and energy metabolism.
- Bovatec 20cc® for the control of coccidiosis caused by Eimeria species.

Feeding Recommendation:

Introduce calf meal from 4 days of age in increasing amounts gradually until weaning. Weaning can occur when consuming 1 Kg of meal a day for three consecutive days.

Feed should be offered fresh daily and troughs or other receptacles should be cleaned out frequently.

Fresh clean water must always be available.

Storage

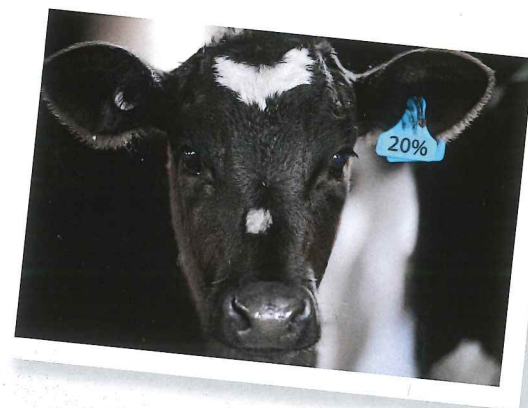
Like all feedstuffs, calf feed should be stored clean and dry, and protected from the weather and any rodent or insect infestation.

Important!

Bovatec 20cc® is registered pursuant to the ACVM Act 1997, No: A09679

See www.foodsafety.govt.nz for registration conditions.

- Contains Lasalocid sodium 200g/Kg
- Care must be exercised when feeding concurrently with other antimicrobials. Do not feed with any other ionophores.



- By law the user must take due care, obtaining expert advice, if necessary, to avoid unnecessary pain and distress when using the product other than as directed on the label.

- Withholding periods: Meat – Nil, Milk – Nil.

- It is an offence for users of this product to cause residues exceeding relevant MRL in NZ (Maximum Residues Limits to Agricultural compounds Food Standard)

Ensure young animals are adapted to medicated feed 2–3 weeks prior to weaning, as coccidial challenge is most likely in the 8 weeks after weaning. In any case, initiate treatment at least two days prior to expected coccidial challenge.

Caution!

Do not allow dogs, horses or other equine access to feeds containing Bovatec 20cc®, as ingestion by these species may be fatal.

Packaging

Available in 25Kg bags, 1 tonne bulk bags and bulk.

For Product availability and price, contact: